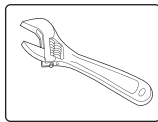


**IMPORTANT:** Make sure to turn off the main water supply to the valve before you begin

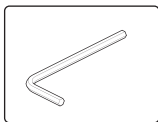
## ST6000 pressure balancing unit

### taking the cartridge out

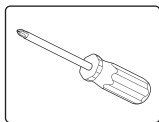
#### Tools You May Need



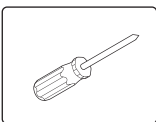
Adjustable Wrench



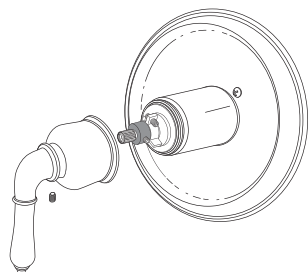
Allen Wrench



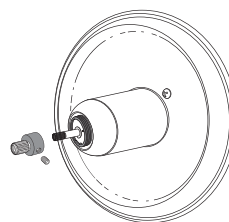
Phillips Screwdriver



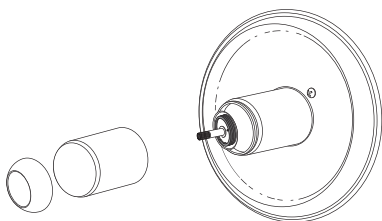
Flat Head



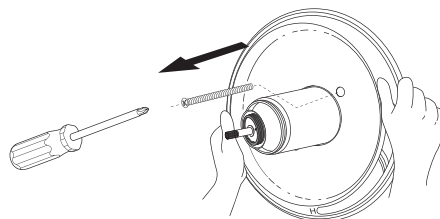
Remove handle.  
Use an allen wrench and unscrew the allen screw on the bottom of the handle and remove the handle.



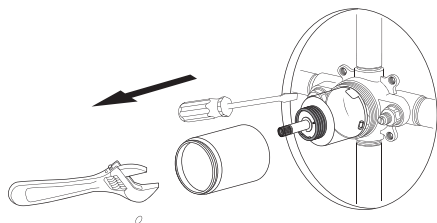
Remove handle adaptor  
(Note: some handles do not have an adaptor)  
Use an allen wrench and unscrew the allen screw on the adaptor and then pull the adaptor off the cartridge.



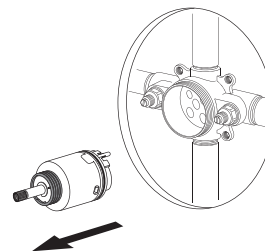
Remove sleeve cap and sleeve  
With your hands unscrew the sleeve cap and then slide the finish sleeve off the raw sleeve



Remove face plate.  
Use a screw driver and take the face plate off from the face plate.  
With your hands move the face plate side to side this will help loosen it. Once loose, simply pull straight out.



**Important:** Before you take the cartridge off use a flat head and turn both service stops off.  
Use an adjustable wrench and screw the raw sleeve off the valve.



With your hands pull the cartridge out of the valve.

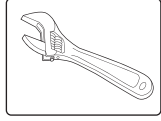


**IMPORTANT:** Make sure to turn off the main water supply to the valve before you begin

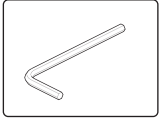
## ST6000 pressure balancing unit

### Putting the cartridge in

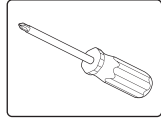
#### Tools You May Need



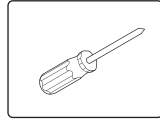
Adjustable Wrench



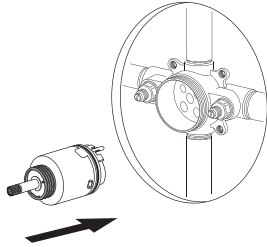
Allen Wrench



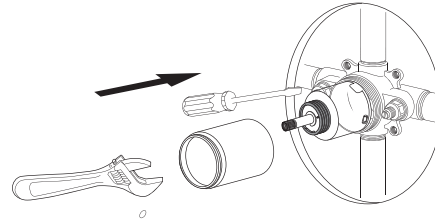
Phillips Screwdriver



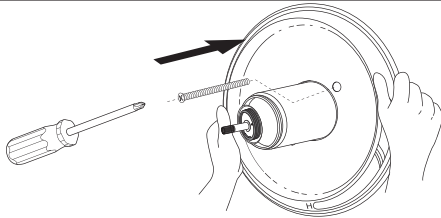
Flat Head



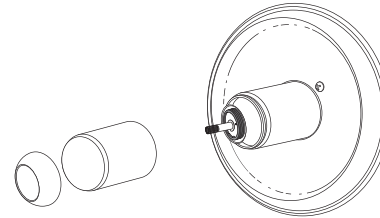
Apply silicone grease to all rubber washers if needed. Place cartridge into valve chamber. Line up the nipples on the back of the cartridge to the slots on the inside of the rough in valve chamber.



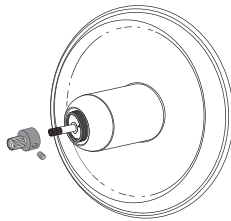
Screw the raw sleeve onto the valve. At the same time hold the cartridge in place with one hand and with the other hand, hand tighten the raw sleeve. Make sure the cartridge does not move out of place. If cartridge moves it could cause leaks. Once raw sleeve is secure use an adjustable wrench and tighten it. With a flat head now open the service stops. Turn the main water back on. Turn cartridge on to check. If you have any leaks remove cartridge double check washers and repeat the step.



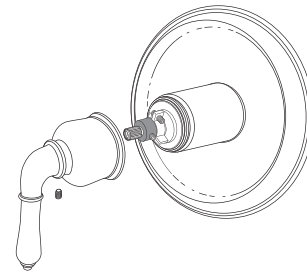
Place face plate back on. With your hands move the face plate over the raw sleeve and push it back against the wall. Screw the face plate screws back on and secure the face plate to the wall.



Slide the finished sleeve back onto the raw sleeve, and then screw the sleeve cap back onto the raw sleeve.



Screw the handle adaptor onto the stem of the cartridge. (Note: some handles do not have an adaptor)



Place handle onto the valve and screw the set screw on the bottom of the handle and tighten it to the cartridge.

