

SBC500BSSTB7

50.25" x 23.75" x 27.0" (H x W x D)

Commercially approved portable beer dispenser with black cabinet and stainless steel door

Highlights:

Commercially approved for use in food service establishments

Stainless steel door with curved towel bar handle for added luxury

Complete tap kit includes everything you need to pour the perfect draft

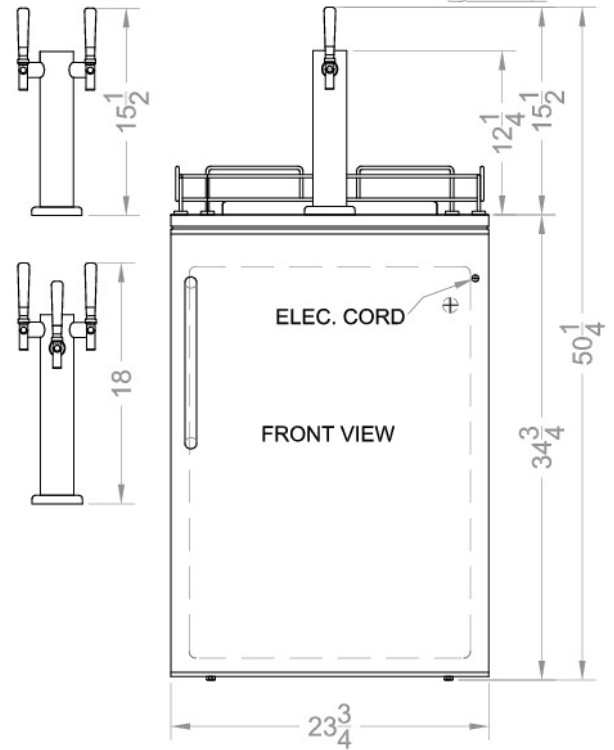
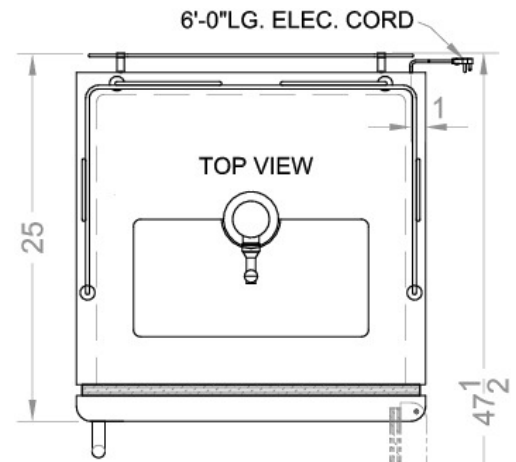
5 lb. CO2 tank with regulator included



Commercially approved	ETL-S Listed to NSF-18
Full-sized beer dispenser	Interior accommodates half, quarter, or mini (pony) kegs
Fully finished black cabinet	Allows the unit to be used freestanding
Stainless steel door	Durable design with lasting elegance
Professional towel bar handle	A curved handle in brushed stainless steel provides generous room for a comfortable grip
KIT 490 included	Complete tap system with 5 lb. CO2 tank and regulator, draft arm, Sankey American tap, connection hardware, and cleaning kit
Manual defrost	Energy efficient operation for stable interior temperature
Adjustable thermostat	Manage the temperature with ease and accuracy
Casters	Four sturdy casters enable smooth mobility easy cleanup
Top guard rail	A silver rail neatens service and prevents spills

Specifications:

Height	50.25"
Width	23.75"
Depth	27.0"
Capacity	6.4 cu.ft.
Energy Usage/Year	345.0 kWh/year
Voltage/Frequency	115 V AC/60 Hz
US Electrical Safety	UL
Reversible	No
Door Swing	RHD
Defrost Type	Manual
Compressor Warranty	5 Years
Parts/Labor Warranty	1 Year
Sanitation	ETL-S



Summit Appliance Division, Felix Storch, Inc.
 770 Garrison Ave • Bronx, NY 10474
 Phone: 718-893-3900 • Fax: 718-842-3093
 Email: info@summitappliance.com