

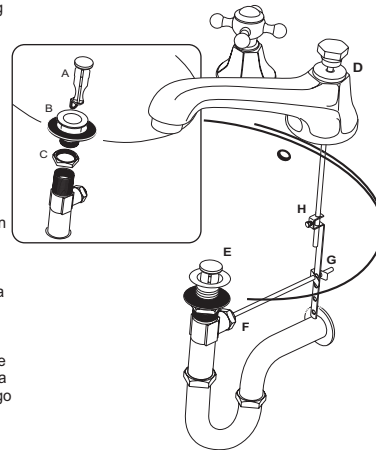
Tips for Successful Installations

- Use joint compound or Teflon® tape on all threaded connections to prevent leaks.
- Use a soft cloth to protect the faucet's finish when using a wrench, pliers or other tools that could scratch the faucet.
- Tighten all hose connections by hand. Do not over tighten.
- Before turning main water supply back on, open several faucets around the house to prevent pressure from building up. Remove aerator from faucet before turning on water. Flush drain for several minutes before replacing aerator. DO NOT use joint compound or Teflon® tape to reconnect aerator.
- If you experience problems with the installation consult a professional plumber.

Disassemble handles. Hold handle assembly. Handle stems are marked H for hot and C for cold. Turn hot handle counter-clockwise until it stops. Turn cold handle clockwise until it stops. Loosen set screw and pull handle off of handle valve stem. Unscrew handle base (escutcheon) and remove one rubber gasket from handle valve stem. Loosen metal locknut.

Install pop-up plunger.

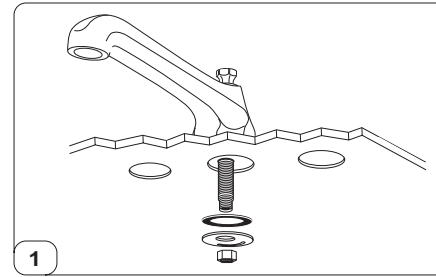
- Remove pop-up plunger from center of drain assembly.
- Unscrew drain flange and remove thin rubber gasket.
- Loosen metal locknut as far as possible. Apply generous bead of plumbers' putty to bottom of drain flange and set on drain opening in sink. Insert drain assembly into drain hole from bottom of sink. Push thick rounded rubber gasket up into bottom of drain opening. Screw drain assembly into flange. Adjust so pivot opening is to rear. Tighten metal locknut. Putty will ooze out from flange. Immediately wipe with wet cloth.
- Slide lift rod through hole in faucet.
- Insert pop-up into drain. Hole in bottom of pop-up is to the back of the drain. Remove metal lock nut from hole in back of drain assembly. Remove spring clip from pivot rod.
- Slide locknut over long end of pivot rod and onto ball. Insert short end of pivot rod into opening in rear of drain assembly. Remember to apply tape or compound to threads. Tighten locknut, keeping ball in place. Make sure pivot rod can still move.
- Slide one end of spring clip onto pivot rod. Slide end of pivot rod through hole in lift rod strap. Slide other end of spring clip onto pivot rod. Pinch spring clip closed.
- Insert bottom of lift rod into hole at top of lift rod strap. Tighten thumb screw.
- Connect drain assembly to main drain line.



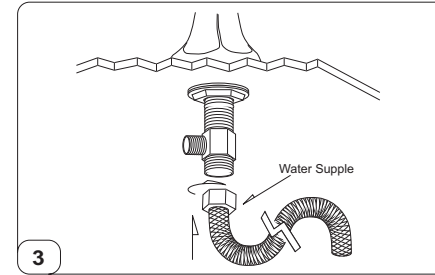
Cómo instalar el émbolo de tensor.

- Retire el émbolo de tensor del centro del sistema de desagüe.
- Desatornille la corona de desagüe y retire el empaque delgado de hule.
- Aloje la contratuerca de metal lo más que pueda. Aplique una base suficiente de mastique en la parte inferior de la corona y colóquela en la abertura de desagüe del lavabo. Introduzca el sistema de desagüe dentro del hoyo de drenaje de la parte inferior del lavabo. Empuje el empaque grueso redondo de hule hacia arriba y dentro de la parte inferior de la abertura del desagüe. Atornille el sistema de desagüe dentro de la corona. Ajuste de modo que la abertura del pivote quede hacia atrás. Apriete la contratuerca de metal. El mastique brotará de la corona. Límpielo inmediatamente con un paño mojado.
- Deslice la barra de elevación a través del hoyo en el grifo.
- Introduzca el tensor dentro del desagüe. El hoyo en la parte inferior del tensor está en la parte de atrás del desagüe. Retire la contratuerca de metal del hoyo en la parte de atrás del sistema de desagüe. Retire la horquilla de la barra de pivote. Deslice la contratuerca sobre el lado largo de la barra de pivote y sobre la esfera.
- Introduzca la parte corta de la barra de pivote dentro de la abertura en la parte de atrás del sistema de desagüe. No olvide aplicar cinta o sellador en las roscas. Apriete la contratuerca, manteniendo la esfera en su lugar. Asegúrese que la barra de pivote quede movable.
- Deslice una punta de la horquilla sobre la barra de pivote. Deslice la punta de la barra de pivote a través del hoyo en la tira de la barra de elevación. Deslice la otra punta de la horquilla sobre la barra de pivote. Asegure la horquilla hasta que cierre.
- Introduzca la parte inferior de la barra de elevación dentro del hoyo en la parte superior de la tira de la barra de elevación. Apriete el tornillo de mariposa.
- Cómo conectar el sistema de desagüe a la línea principal de desagüe.

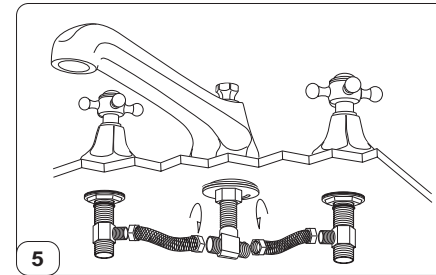
Help Info? Please call Toll-FREE customer service line at 1-800-888-6604 for additional assistance service.



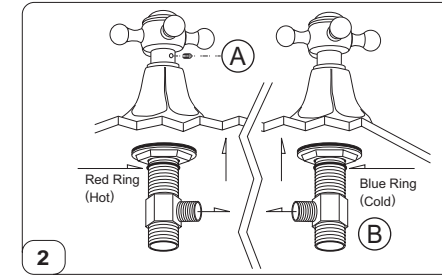
Install spout. Remove T connector and mounting hardware from stem of spout. Ensure gasket under rim of spout is firmly seated in groove. Apply plumbers' putty to bottom of spout. Mount spout through center hole of sink. From underneath sink, place rubber gasket and metal washer on spout stem. make sure crescent-shaped slot in metal washer is to the back. Screw mounting nut onto stem until finger tight.



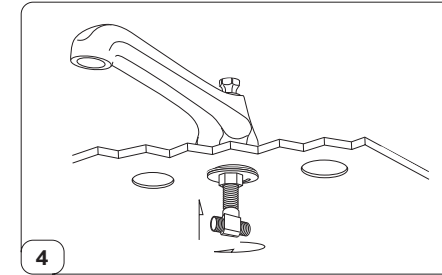
Attach water supply lines. Connect main water supply lines to bottom openings of handle valve stems.



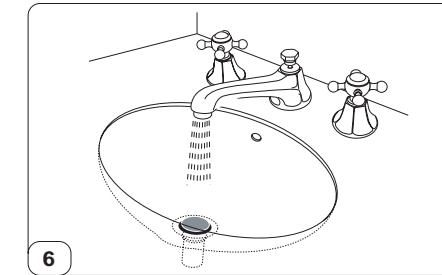
Connect water supply hoses first to T connector and then to handle valve stems.



A. From underneath sink, slide hot stem up through left hole in sink. The side opening in the stem faces out. Place rubber gasket on top of stem. Screw handle base (escutcheon) onto stem until finger tight. Adjust height of the stem to the thickness of the sink.
B. The stem can be adjusted up or down by loosening or tightening the metal locknut underneath the sink. Tighten underneath metal locknut until finger tight. Repeat for cold stem in right hole. Position handle and tighten with set screw.



Screw T connector onto bottom of spout stem until it stops. Position T connector at a slight angle.



Flush system. Turn main water supply on. Turn on both faucet handles. Let run for two minutes. Replace aerator. Check for leaks.

