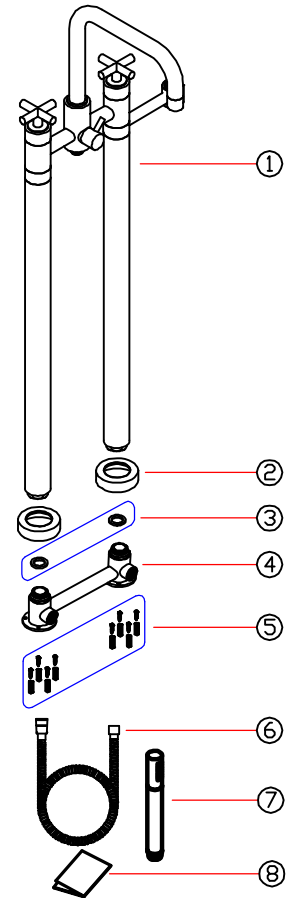


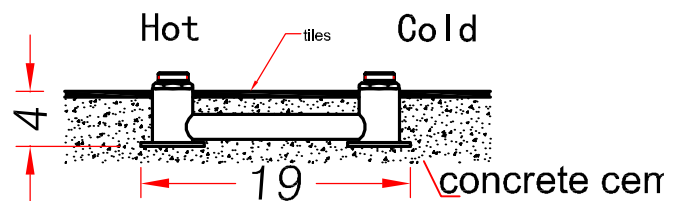
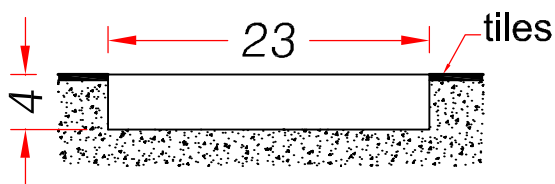
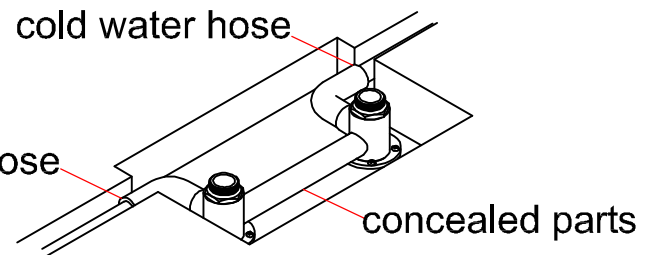
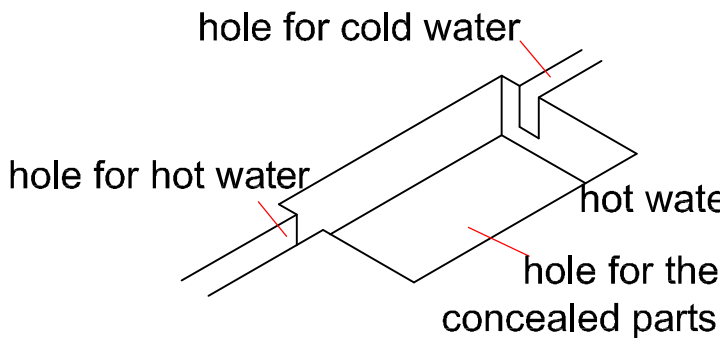
INSTALLATION INSTRUCTION (TYPE B)

S/N	description	No.s
1	body of mixer	1
2	decoration cover	2
3	gasket	2
4	concealed parts	1
5	self-locking screws	8
6	shower hose	1
7	hand shower	1
8	user's manual	1

List of standard fittings



Installation Steps:



i. As per above shown, please cut right holes for the concealed parts and hot/cold water hoses in the floor

ii. Fix the concealed parts in the floor by self-locking screws, and connect hot/cold water hoses. Then open water valve and check to make sure there is no any leakage, the plumber can start