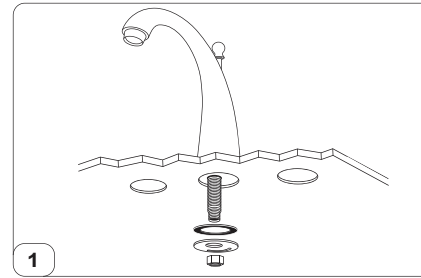


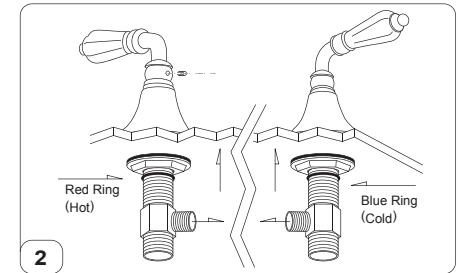
Tips for Successful Installations

- Use joint compound or Teflon® tape on all threaded connections to prevent leaks.
- Use a soft cloth to protect the faucet's finish when using a wrench, pliers or other tools that could scratch the faucet.
- Tighten all hose connections by hand. Do not over tighten.
- Before turning main water supply back on, open several faucets around the house to prevent pressure from building up. Remove aerator from faucet before turning on water. Flush drain for several minutes before replacing aerator. DO NOT use joint compound or Teflon® tape to reconnect aerator.
- If you experience problems with the installation consult a professional plumber.

Disassemble handles. Hold handle assembly. Handle stems are marked H for hot and C for cold. Turn hot handle counter-clockwise until it stops. Turn cold handle clockwise until it stops. Loosen set screw and pull handle off of handle valve stem. Unscrew handle base (escutcheon) and remove one rubber gasket from handle valve stem. Loosen metal locknut.



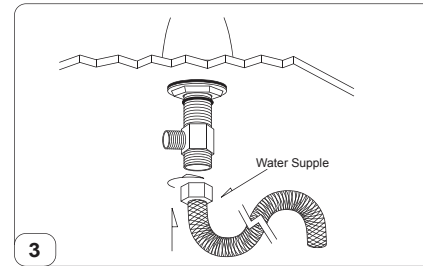
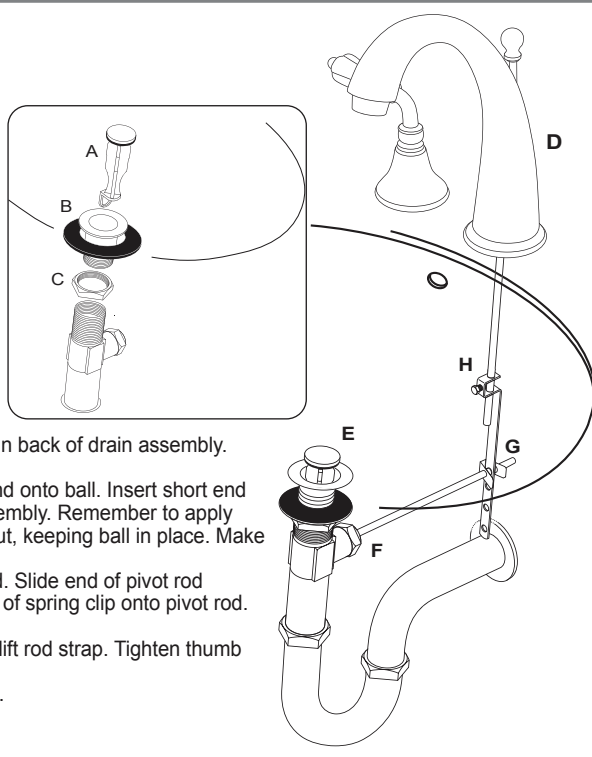
Install spout. Remove T connector and mounting hardware from stem of spout. Ensure gasket under rim of spout is firmly seated in groove. Mount spout through center hole of sink. From underneath sink, place rubber gasket and metal washer on spout stem. make sure crescent-shaped slot in metal washer is to the back. Screw mounting nut onto stem until finger tight.



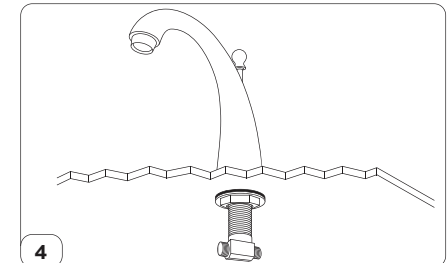
A. From underneath sink, slide hot stem up through left hole in sink. The side opening in the stem faces out. Place rubber gasket on top of stem. Screw handle base (escutcheon) onto stem until finger tight. Adjust height of the stem to the thickness of the sink.
B. The stem can be adjusted up or down by loosening or tightening the metal locknut underneath the sink. Tighten underneath metal locknut until finger tight. Repeat for cold stem in right hole. Position handle and tighten with set screw.

Install pop-up plunger.

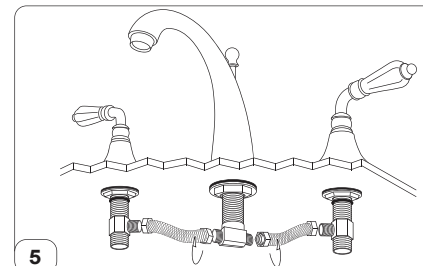
- Remove pop-up plunger from center of drain assembly.
- Unscrew drain flange and remove thin rubber gasket.
- Loosen metal locknut as far as possible. Insert drain assembly into drain hole from bottom of sink. Push thick rounded rubber gasket up into bottom of drain opening. Screw drain assembly into flange. Adjust so pivot opening is to rear. Tighten metal locknut.
- Slide lift rod through hole in faucet.
- Insert pop-up into drain. Hole in bottom of pop-up is to the back of the drain. Remove metal lock nut from hole in back of drain assembly. Remove spring clip from pivot rod.
- Slide locknut over long end of pivot rod and onto ball. Insert short end of pivot rod into opening in rear of drain assembly. Remember to apply tape or compound to threads. Tighten locknut, keeping ball in place. Make sure pivot rod can still move.
- Slide one end of spring clip onto pivot rod. Slide end of pivot rod through hole in lift rod strap. Slide other end of spring clip onto pivot rod. Pinch spring clip closed.
- Insert bottom of lift rod into hole at top of lift rod strap. Tighten thumb screw.
- Connect drain assembly to main drain line.



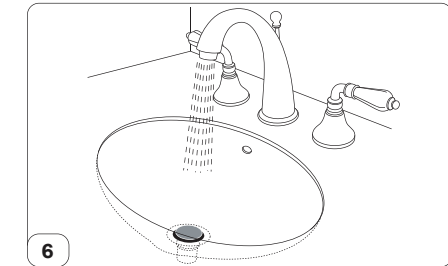
Attach water supply lines. Connect main water supply lines to bottom openings of handle valve stems.



stops. Position connector at a slight angle.



Connect water supply hoses first to T connector and then to handle valve stems.



Flush system. Turn main water supply on. Turn on both faucet handles. Let run for two minutes. Replace aerator. Check for leaks.

