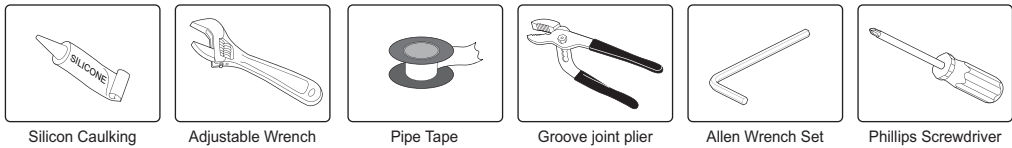
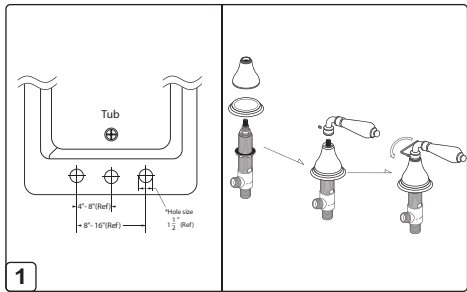


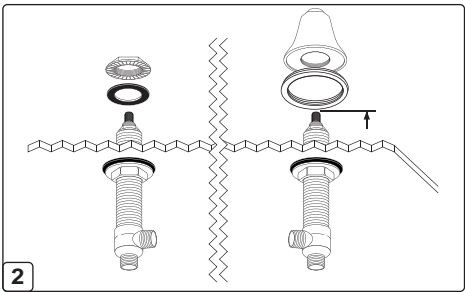
Tools You May Need:



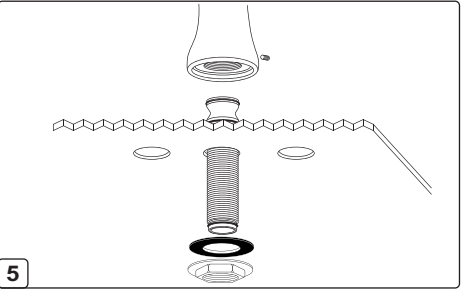
Silicon Caulking Adjustable Wrench Pipe Tape Groove joint plier Allen Wrench Set Phillips Screwdriver



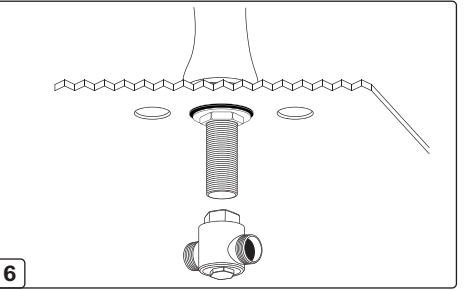
Before beginning installation:
 If drilling holes in deck surface Huntington Brass recommends drilling a 1 1/2" diameter hole for all roman tub valves. See diagram above.
 Next, remove the handles from the hot and cold valve assemblies if not done so already. First loosen the set screw on the side of the handle tip using an allen (hex) wrench (please note some handles may use a top side screw) Next unscrew the escutcheon base, and flange or top lock nut if applicable. Once handles are removed from the valves you are ready to begin installation.



Begin installing valve assemblies:
 First make sure that the bottom lock nut and washer are installed on to the valve. Loosen the lock enough to let valve stem stick through the deck surface. Next, from underneath the deck side valve assembly up through hole in counter. Screw the top lock nut or handle base flange (depending on handle style) onto the top of the valve. The height of the valve can be adjusted by tightening and loosen in the bottom and top lock nuts. Various handle escutcheon base will require different heights. To adjust the valve to the correct height install the escutcheon base on the valve, use the flange ring if applicable as well, pull the valve down from under the deck and measure the height of the valve stem protruding from the deck. Remove the trim and secure at proper height by tightening the top lock nut down to hold the valve body in the proper position. Next, adjust the position of the valve stem such that the handle tip is pointing in the desired position. Lastly, from underneath the deck tighten the bottom lock nut to secure the tight.



To Install spout
 First remove the T connector and mounting hardware from stem of spout. Ensure that the O-ring or gasket under rim of spout (if applicable) is firmly seated in position. (this may be under the spout base or under the base ring if applicable to the style of faucet) If using a quick-connect shank first install the shank into the base of the spout and secure by tightening the set screw on the back side of the spout. Next, Mount the spout through the center hole of the deck surface. Line up the spout so that it is centered between the handles and is covering completely the hole in the deck. From underneath the deck, place mounting hardware onto the spout shank and tighten lock nut down securing the spout in place. Make sure that the spout can not move back and forth. If spout is loose double check the set screw and the lock nut to make sure they are both securely tightened.



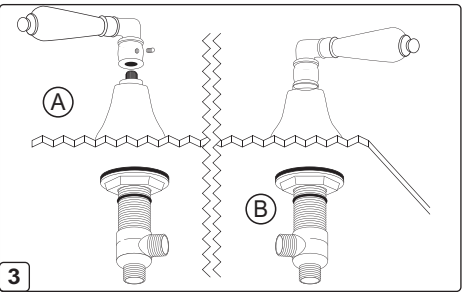
Screw T connector onto bottom of spout stem until it is tight. Position T connector at a slight angle. Make sure that there is a washer inserted in the top of the T connector before installing. Screw down until hand tight plus a 1/2 turn with a wrench. Be sure to check for leaks after installation is complete.

Before Your Installation

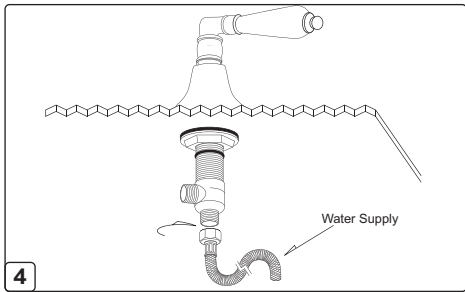
- Read all instructions carefully.
- Assemble all tools.
- Turn off main water supply before removing old faucet and fixtures.
- Clean surface before installing new faucet.
- Insert a cloth or stopper into drain to prevent small parts from getting lost.
- HB recommends that when cleaning your HB faucet to only use soap and warm water. The use of any chemical substances will void finish warranty

Tips for Successful Installations

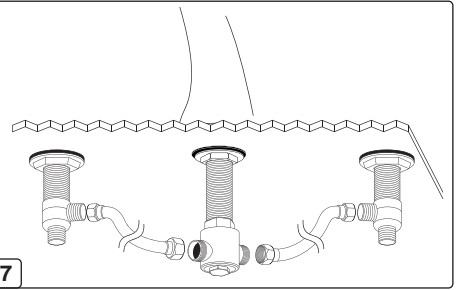
- Use joint compound or Teflon® tape on all threaded connections to prevent leaks.
- Use a soft cloth to protect the faucet's finish when using a wrench, pliers or other tools that could scratch the faucet.
- Tighten all hose connections by hand. Do not over tighten.
- Before turning main water supply back on, open several faucets around the house to prevent pressure from building up. Remove aerator from faucet before turning on water. Flush drain for several minutes before replacing aerator. DO NOT use joint compound or Teflon® tape to reconnect aerator.
- DO NOT use "plumbers putty" or any oil based sealant. HB recommends silicon caulking to be used to seal drain flange and other parts.
- If you experience problems with the installation consult a professional plumber.



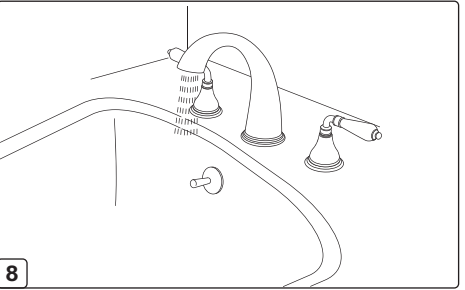
Once the valve assembly is installed and secure you may continue installing the handle trim. After making sure that the valve bodies are adjusted correctly line up the handle base flange ring if needed, and screw the escutcheon onto the valve (Note: some handle escutcheons will screw onto the 9/16 all thread at the top of the valve stem, and some will screw directly on to the valve body thread itself). After the handle base is tightened down install the handle tip. (Repeat steps 2 & 3 for cold side installation)



After the valves and handles are in place, go ahead and attach the water supply lines. To connect the main water supply lines to bottom openings of handle valve stems Connect the supply hoses from the in wall angle stops using a coupling nut and cone washer on each connection. If soldering the connections with copper line make sure not to over heat the valve bodies as this may damage the cartridge components inside. If you are heating the valve body HB recommends that after setting the valve height and securing the valve body remove the cartridge before applying heat. (Skip step 3) Reinstall the cartridge and handle trim after the soldering is finished. If you are also soldering copper pipe to the spout as well install the spout first and then proceed to install the cartridges and handle trim last.



Finally, connect the water supply hoses first to T connector and then to handle valve stems. For best function connect hoses to far end of T connector making a larger arc with the supply hose. This will ensure that no kinks will occur in the flex line.



Flush system
 Before turning main water supply on open various faucets around the house to lessen pressure build-up in the lines. Turn main water supply on. First remove any aerator in spout if one is used (many Roman spouts do not use aerators) Then turn on both hot and cold valves. Let the water run for at least 2-3 minutes. Check for leaks in all major connection areas.

