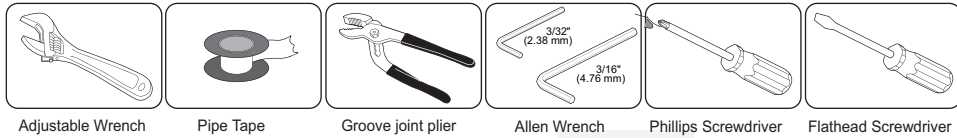


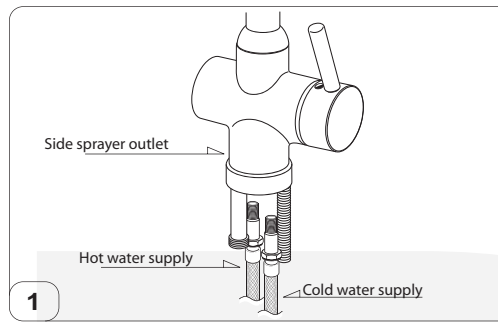
Tools You Will Need



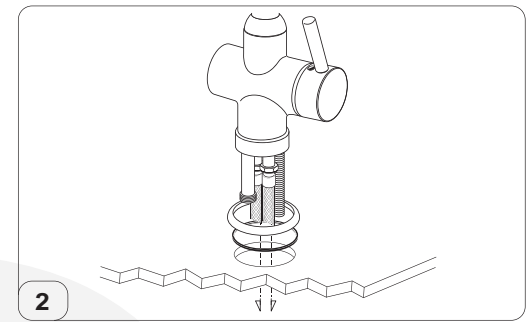
Adjustable Wrench Pipe Tape Groove joint plier Allen Wrench Phillips Screwdriver Flathead Screwdriver

Tips for Successful Installations

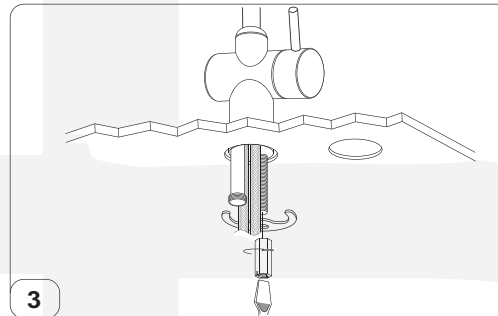
- Use joint compound or Teflon® tape on all threaded connections to prevent leaks.
- Use a soft cloth to protect the faucet's finish when using a wrench, pliers or other tools that could scratch the faucet.
- Tighten all hose connections by hand. Do not over tighten.
- Before turning main water supply back on, open several faucets around the house to prevent pressure from building up. Remove aerator from faucet before turning on water. Flush drain for several minutes before replacing aerator. DO NOT use joint compound or Teflon® tape to reconnect aerator.
- If you experience problems with the installation consult a professional plumber.



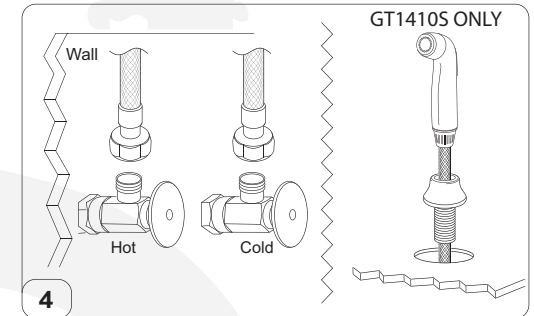
Installing valve:
Be sure that valve supply inlets are facing downward. Valve should be labeled H / C for hot & cold sides. Connect hot & cold supply lines to proper side.



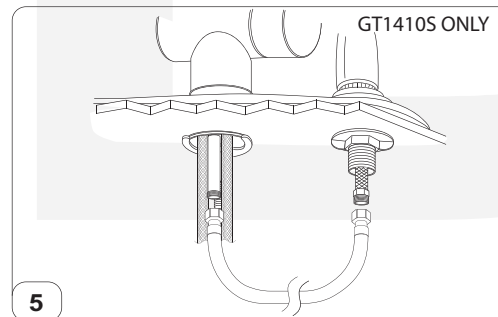
Set the flange and rubber washer on the sink surface. Centering the flange over the hole. Insert both flexible hoses through flange, thick rubber washer and hole in sink ledge. hole in the counter top.



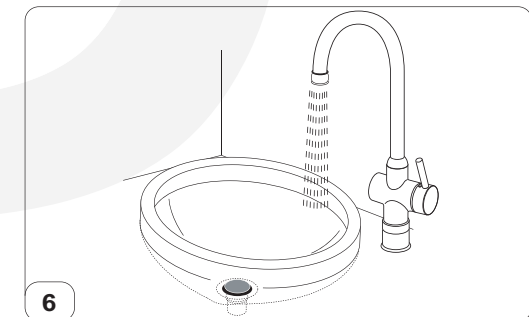
Installing the Lock Nut. - From Underneath the sink, Place the large U-ring over the long fixed Brass Bolts. Feed all the hoses through the opening in the large U-ring, making sure the open end of the U-ring is closest to the Spray head Hose



Connect other end of main water supply lines to wall water supply valves. Install side sprayer and tighten the wing nut



Connect the hose between the side sprayer and the Side Sprayer water outlet.



Flush system. Turn main water supply on. Turn on faucet handle and sprayer. Let run for two minutes. Replace aerator. Check for leaks.



Help Info? Please call Toll-FREE customer service line at 1-800-888-6604 for additional assistance service.