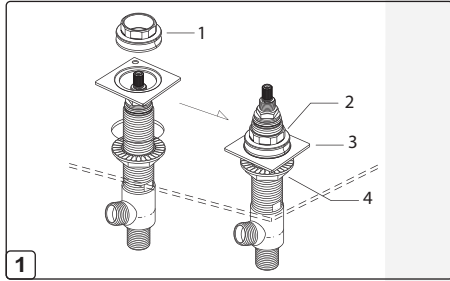
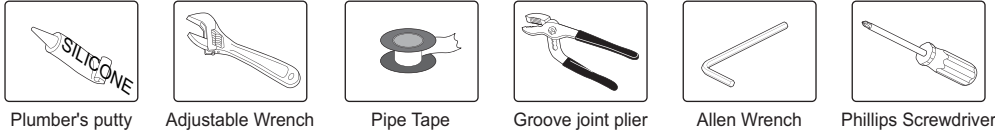


Tools You Will Need

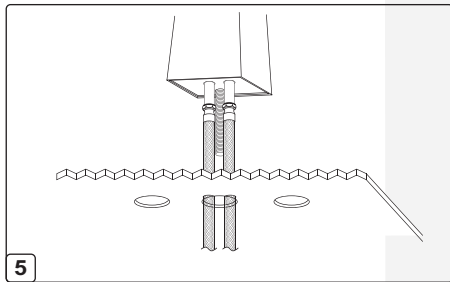


Before installing make sure that if the hole are being drilled into solid surface counter top that they are drilled no larger than 1.5".

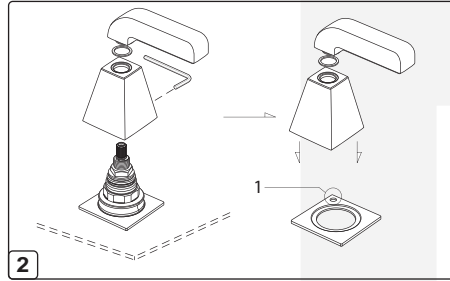
Install Valve Bodies:

To install the valve bodies first loosen the bottom lock nut on the neck of the valve such that the valve has enough room when place through the hole from under the counter top. Next, place the square handle flange over the valve body. Then, screw the top lock from the handle base on to the valve body, screw the lock nut down until it stops. Position the valve body and the square trim flange as desired. Make sure that the hole on the flange is positioned towards the back on the left side. Once the flange is in the desired position make sure that the top lock sits securely in the round indentation in the middle of the flange, and tighten the bottom lock nut until valve body is secure.

Hint: At this point you can test the handle tip to make sure that the stem position lines up properly with the square base. Otherwise you may need to loosen the valve body and adjust the position. (Repeat for other side)

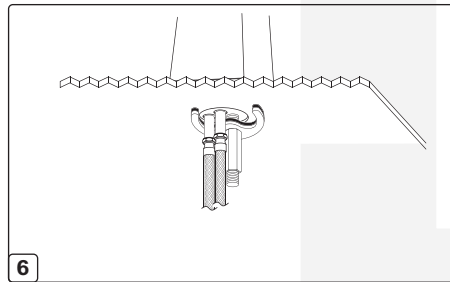


Installing the spout:
After the flex hoses and mounting bolt are both installed into the bottom of the spout now you are ready to install the spout in to the counter surface. First, slide both flex hoses through the center hole in the counter top. Place the spout over the hole and the mounting bolt down into the center hole. Center the spout over the hole and adjust the position such that the spout is an even distance from both handles.

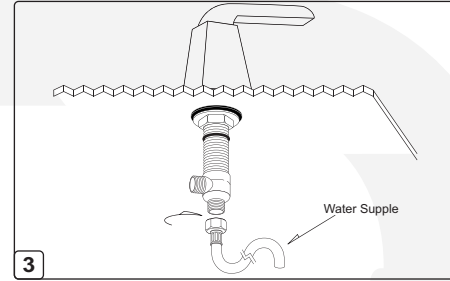


Installing Handle Trim:

When installing the handle trim it is important to make sure that the pin on the bottom of the base lines up correctly with the hole in the corner of the flange such that the set screw if facing the back once installed. Place the square handle base over the valve stem and sliding it onto the lock nut positioning the pin into the hole. Tighten and secure the handle base with the allen key provided. Next, place the handle tip on to the stem turn the handle into the off position (pointing left for the hot side & pointing right for the cold side) Make sure that the square edges of the handle tip line up evenly with the square edges of the handle base and flange (if they do not then the valve body positioning may have to be adjusted) Place the white bushing ring onto the bottom of the handle tip and place the handle tip on to the valve stem in the desired position. Tighten and secure the handle tip with the set screw on the under side on the handle tip. (repeat for other side)

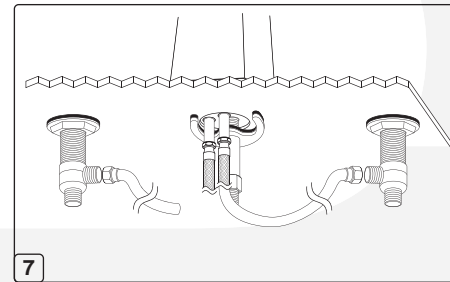


Installing the spout:
Next, from underneath the counter surface slide the U shaped washer and mounting bracket onto the mounting bolt. Position the mounting bracket and washer so that the flex hoses run through the middle of the bracket. Adjust the spout into the desired position and tighten the mounting nut onto the bolt until the spout is secure. Once tighten the spout should not be able to be moved back and forth by bumping or nudging. (Do not over tighten too much as excess stress can be bad for the spout)



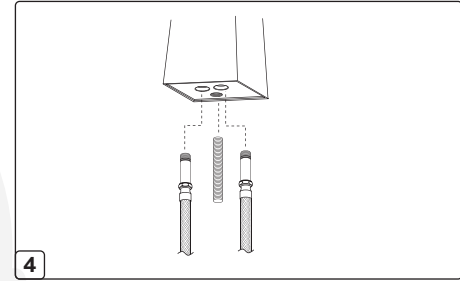
Installing Water supply:

Connect the water supply hoses from the angle stops in the wall to the bottom inlets of the hot and cold valve bodies. There are various type of connections that can be used. The most common installation used is to use the existing flexible copper line with a cone washer and coupling nut. These item are not supplied by Huntington Brass in your faucet set. HB recommends when installing the water lines to the inlet of the valve body that a new rubber cone washer be used in place of the old one to ensure a good seal with out any leaking.



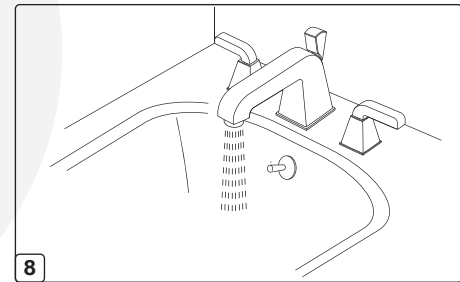
Connect the water supply hoses:
After all of the components are securely installed go ahead and connect the water supply hoses from the bottom of the spout to the side outlets of the hot and cold valve bodies. Screw the 1/2" hex nut of each supply hose to the 1/2" connection on the side of the valve body. Make sure that the rubber washers inside the hose connection nut are not damaged in any way. Screw the nuts down until hand tight and add an extra 1/2 turn with a wrench. **DO NOT OVER TIGHTEN.**

(You may now turn on the main water supply. Remember to open various other fixtures around the house to avoid damage from water hammer)



Assembling the Spout:

Before mounting the spout onto the counter surface, first install the water supply flex hoses into the inlets on the bottom of the spout. Make sure that the rubber o-rings on the flex hose connections are damaged in any way. To install simply screw the smaller male threaded connection into the bottom of the spout in a clock wise direction. Next, screw the mounting bolt into the bottom of the spout as well. Once all these parts are assembled the spout is ready to be mounted into the center hole on the counter top surface.



Flush & Check:
After installation is complete you will need to flush the system and inspect all connection areas to make sure there are no leaks. To flush the system first remove the aerator. Turn on both the hot and cold water for about 2-3 minutes. This will allow any debris left in the lines to clear out with out damaging or clogging the faucet. While the water is running check for any leaks above and below the counter surface at all major connection points.

Thank you choosing Huntington Brass

