

Exhaust Fans



FEATURES

- Low profile grill almost disappears into the ceiling
- Plastic damper protects against back drafts and ensures quiet operation
- Easily installs using the double thick keyhole mounting tabs
- Available in contractor packs (6 housings and 6 mbgs)



Model AS54: Economical ASHRAE 62.2 Solution for supplemental exhaust. 4" round duct collar with plastic damper protects against back drafts and allows for up to a 105' of straight duct run.

Models AS50, AS60, AS70: Slim 3¾" housing with a 3" duct outlet allows fan to be mounted into wall applications while a plastic damper protects against back drafts.

CONTRACTOR PACKS





HOUSING MODEL	HOUSING TYPE	DUCT TYPE	MOTOR/ BLADE/GRILL MODELS	# PER PACK
ASHSG	Standard	3" plastic	AS50MBG (50 CFM / 3.0 Sones) AS60MBG (60 CFM / 4.0 Sones) AS70MBG (70 CFM / 4.0 Sones)	6
AWCHSG ⁴	Wago® Quick Connect	3" plastic		
ASMTLHSG	Metal Collar	3" metal		
ATLHSG ⁵	4" duct size	4" plastic		



Wago® Wall Nuts™ provide a quick and easy wiring connection that saves time and the hassles of twisting and taping. Simply strip the wire, then insert into the connector. The clear housing allows you to see that the connection is firm. UL Listed/CSA certified - touch proof and rated to 105° C.

⁴ Wago® Quick Connect Housing, includes Wago® Wall Nuts™ • ⁵ Model AS54 utilizes ATLHSG and AS50MBG • Specifications subject to change.

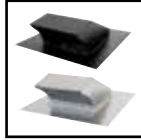


EXHAUST FANS				
MODEL	AS54	AS50	AS60	AS70
Air Movement CFM @ .1 SP	50	50	60	70
Sound Sones @ .1 SP	3.0	3.0	4.0	4.0
Duct Size	4"	3"	3"	3"
ASHRAE 62.2	Local Ventilation	-	-	-
Housing Size	7¼"W x 7¼"D x 4¾"H	7¼"W x 7¼"D x 3¾"H	7¼"W x 7¼"D x 3¾"H	7¼"W x 7¼"D x 3¾"H
Listings / Certifications	 			

Accessories



RCB810: Includes plastic 4" round roof cap, 8' of 4" round flexible ducting, 3" to 4" adapter and 2 zip ties

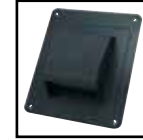


Roof caps with bird screens and dampers

PRC10R: Black, accepts 10" round ducting

PRC8R: Galvanized steel, accepts 8" round ducting

PRC6R: Galvanized steel, accepts 6" round ducting



RCB: ABS Plastic roof cap with damper and bird screen. Accepts up to 4" round ducting

WALL CAPS



Aluminum wall caps with dampers

WC3NS: 3" round ducting

WC4NS: 4" round ducting



Wall caps with dampers

PWC10R: Galvanized steel, accepts 10" round ducting

PWC8R: Galvanized steel, accepts 8" round ducting

PWC6R: Galvanized steel, accepts 6" round ducting

LIGHT FIXTURES



26SBL: GU24 26 watt high efficacy self ballasted fluorescent lamp



18SBL: GU24 18 watt high efficacy self ballasted fluorescent lamp



50WHA: 50 watt halogen lamp, UL approved for wet locations for use with Air King inline series



26WFB: 26 watt, high efficacy compact fluorescent 4 pin triple tube lamp



14WFW: Wet location compact fluorescent 4 pin lamp for use with Air King inline series

DUCTING ACCESSORIES



Metal back draft dampers

BDD4R: 4" round ducting

BDD6R: 6" round ducting

BDD8R: 8" round ducting

BDD10R: 10" round ducting



AK46R: Galvanized steel 4" round to 6" round duct transition

AK34R: Galvanized steel 3" round to 4" round duct transition



Insulated flexible ducting, 25' sections, R-4.2

AKIFD4: 4" round

AKIFD6: 6" round

AKIFD8: 8" round

AKIFD10: 10" round

CONTRACTOR PACKS

HOUSINGS	MOTOR/BLADE/GRILL	# PER PACK	CFM/SONES	DUCT SIZE	SINGLE PACK PAGE
ENERGY STAR® QUALIFIED SERIES					
AK-1HSG	AK80LS1M	4	80/1.0	4" plastic	14
	AK80MBG	4	80/1.5	4" plastic	14
	AK90MBG	4	90/1.5	4" plastic	14
	AK110PNT	4	100/1.5	4" plastic	14
AK150HSG	AK150LST	2	150/1.5	6" metal	13
BFQHSG	BFQ50T	4	50/0.5	4" plastic	15
	BFQ75T	4	70/1.5	4" plastic	15
	BFQ80T	4	80/2.0	4" plastic	15
AKFLSHSG	AKF80T	4	80/0.8	4" metal	20
	AKF100T	4	100/1.5	4" metal	20
HIGH PERFORMANCE SERIES					
BFQHSG	BFQ90MBG	4	90/2.5	4" plastic	15
	BFQ110MBG	4	100/3.5	4" plastic	15
	BFQ140MBG	4	120/4.0	4" plastic	15
ADVANTAGE SERIES					
ASHSG	AS50MBG	6	50/3.0	3" plastic	18
	AS60MBG	6	60/4.0	3" plastic	18
	AS70MBG	6	70/4.0	3" plastic	18

HOUSINGS	MOTOR/BLADE/GRILL	# PER PACK	CFM/SONES	DUCT SIZE	SINGLE PACK PAGE
ADVANTAGE SERIES					
AWCHSG ⁴	AS50MBG	6	50/3.0	3" plastic	18
	AS60MBG	6	60/4.0	3" plastic	18
	AS70MBG	6	70/4.0	3" plastic	18
ASMTLHSG	AS50MBG	6	50/3.0	3" metal	18
	AS60MBG	6	60/4.0	3" metal	18
	AS70MBG	6	70/4.0	3" metal	18
ATLHSG	AS50MBG	6	50/3.0	4" plastic	18
	(model AS54 utilizes ATLHSG and AS50MBG)				
	AS60MBG	6	60/4.0	4" plastic	18
	AS70MBG	6	70/4.0	4" plastic	18
ADVANTAGE SERIES WITH LIGHT					
ASLCHSG	ASLC50MB	4	50/3.0	4" plastic	24
	ASF50MB	4	50/3.0	4" plastic	24
	ASLC70MB	4	70/4.0	4" plastic	24
	ASF70MB	4	70/4.0	4" plastic	24
COMBINATION CERAMIC HEATERS					
AK55HSG	AK55LT	1	70/5.0	4" metal	26

⁴ Wago® Quick Connect Housing, includes Wago® Wall Nuts™ for wiring connection