

BIM44G

33.0" x 14.5" x 23.5" (H x W x D)

15" wide built-in undercounter NSF-listed icemaker with automatic defrost

Highlights:

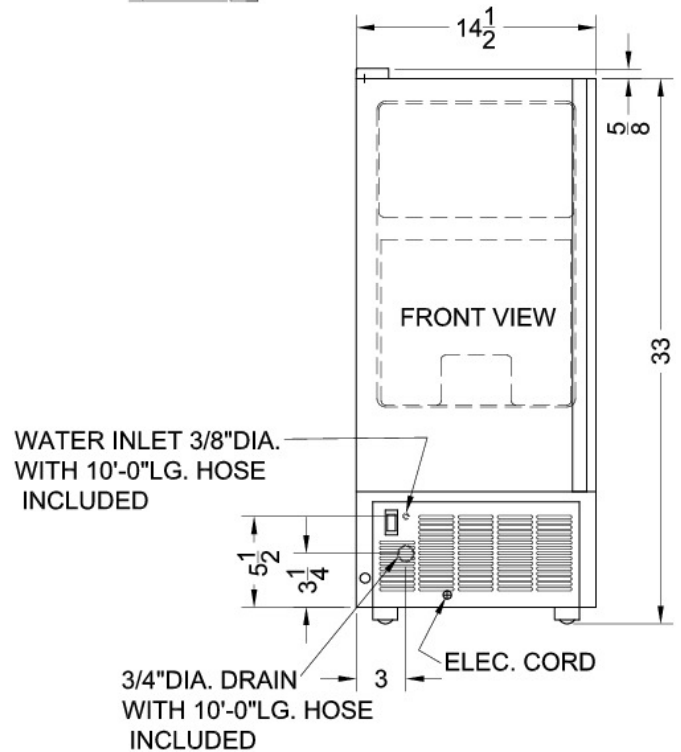
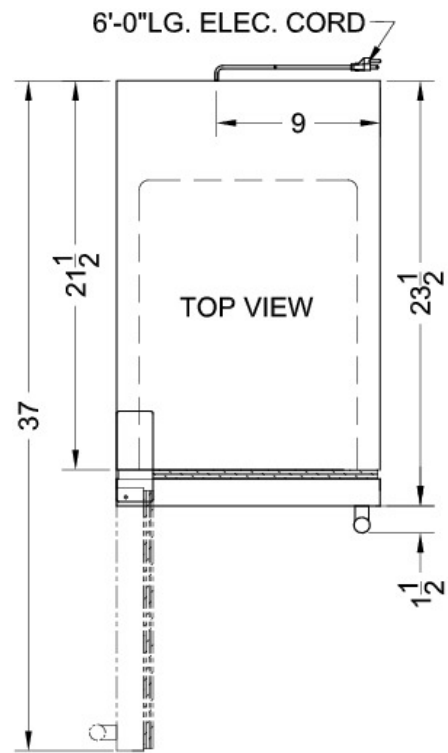
- Flexible design allows built-in or freestanding use
- Automatic defrost saves on user maintenance
- Slim 15" width fits any tight spot
- Stainless steel door includes professional handle



Commercially approved	NSF listed for use in commercial establishments
ENERGY STAR qualified	Certified as a batch-type commercial icemaker for its efficiency
Reversible door	Keep your options flexible with a reversible door that is easy to switch when your arrangement changes; Unit ships LHD but can be reversed in our factory or by the user
Automatic defrost	Reduced maintenance with auto defrost system
Built-in capable	Make the best use of space by installing your icemaker under the counter and flush with other cabinets
Stainless steel door	Professional styling with lasting durability
Professional towel bar handle	A curved handle in brushed stainless steel offers an easy grip
Fully finished black cabinet	Allows the icemaker to be used as a freestanding model
Clear ice cube production	Makes cubes sized at 3/4" x 3/4" x 1"
Insulated storage bin	Ice stays solid longer in this cold-protected bin

BIM44G Specifications:

Height	33.0"
Width	14.5"
Depth	23.5"
Ext Depth with Handle	25.0"
Interior Height 1	18.5"
Interior Width 1	12.0"
Interior Depth 1	16.0"
Shipping Weight	115.0 lbs.
Voltage/Frequency	115 V AC/60 Hz
US Electrical Safety	UL
Amps	4.8
Canadian Electrical Safety	ULC
Reversible	Yes
Door Swing	LHD
Defrost Type	Automatic
Depth with door at 90°	37.0"
Height to Hinge Cap	33.63"
Thermostat Type	Dial
Low Side PSI	130.0
High Side PSI	350.0
Refrigerant Type	R134a
Level Legs Quantity	4
Freon Oz	3.88
Parts/Labor Warranty	1 Year
Compressor Warranty	5 Years
Sanitation	NSF



Summit Appliance Division, Felix Storch, Inc.
 770 Garrison Ave • Bronx, NY 10474
 Phone: 718-893-3900 • Fax: 718-842-3093
 Email: info@summitappliance.com